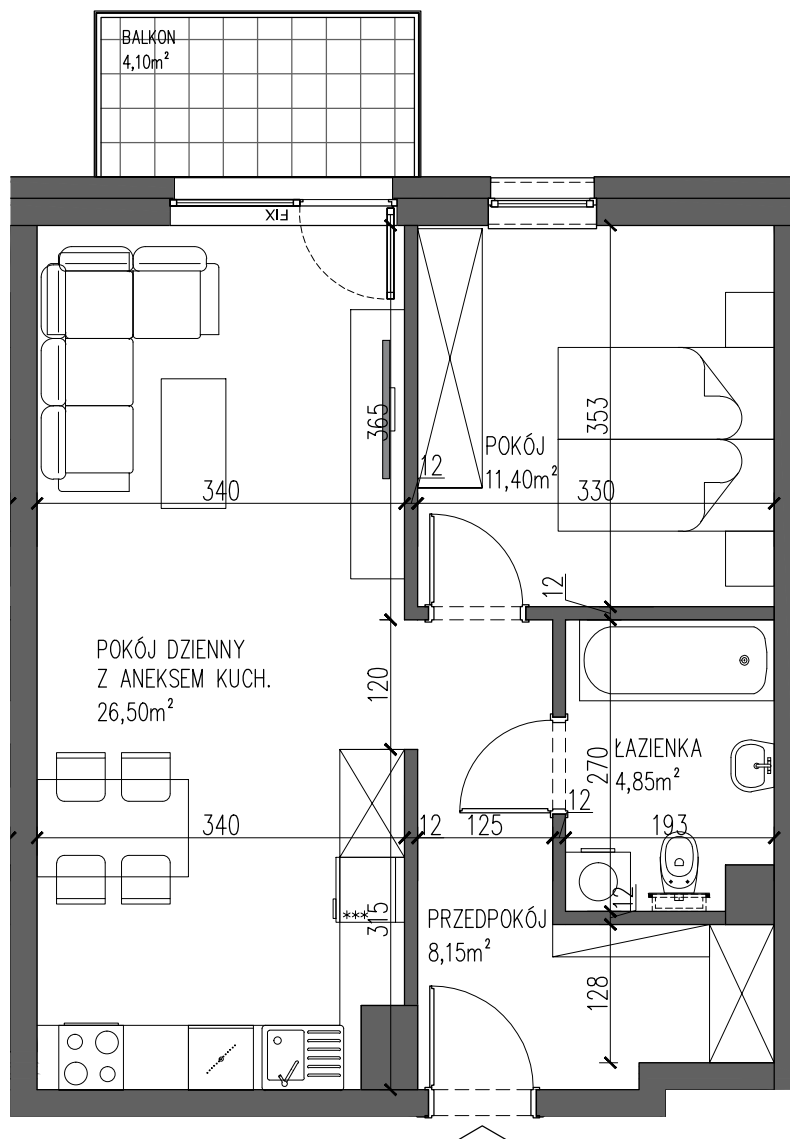
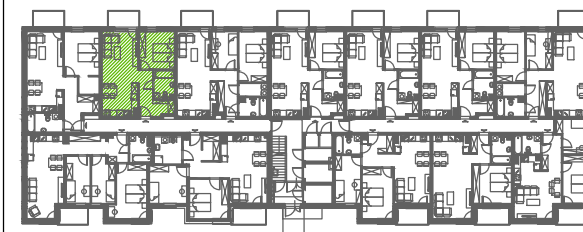


PARTER POWIERZCHNIA 50,90m²



0.1	PRZEDPOKÓJ	8,15
0.2	ŁAZIENKA	4,85
0.3	POKÓJ DZIENNY Z ANEKSEM KUCHENNYM	26,50
0.4	POKÓJ	11,40
	RAZEM	50.90
	BALKON	4.10
	OGRÓD	37.00